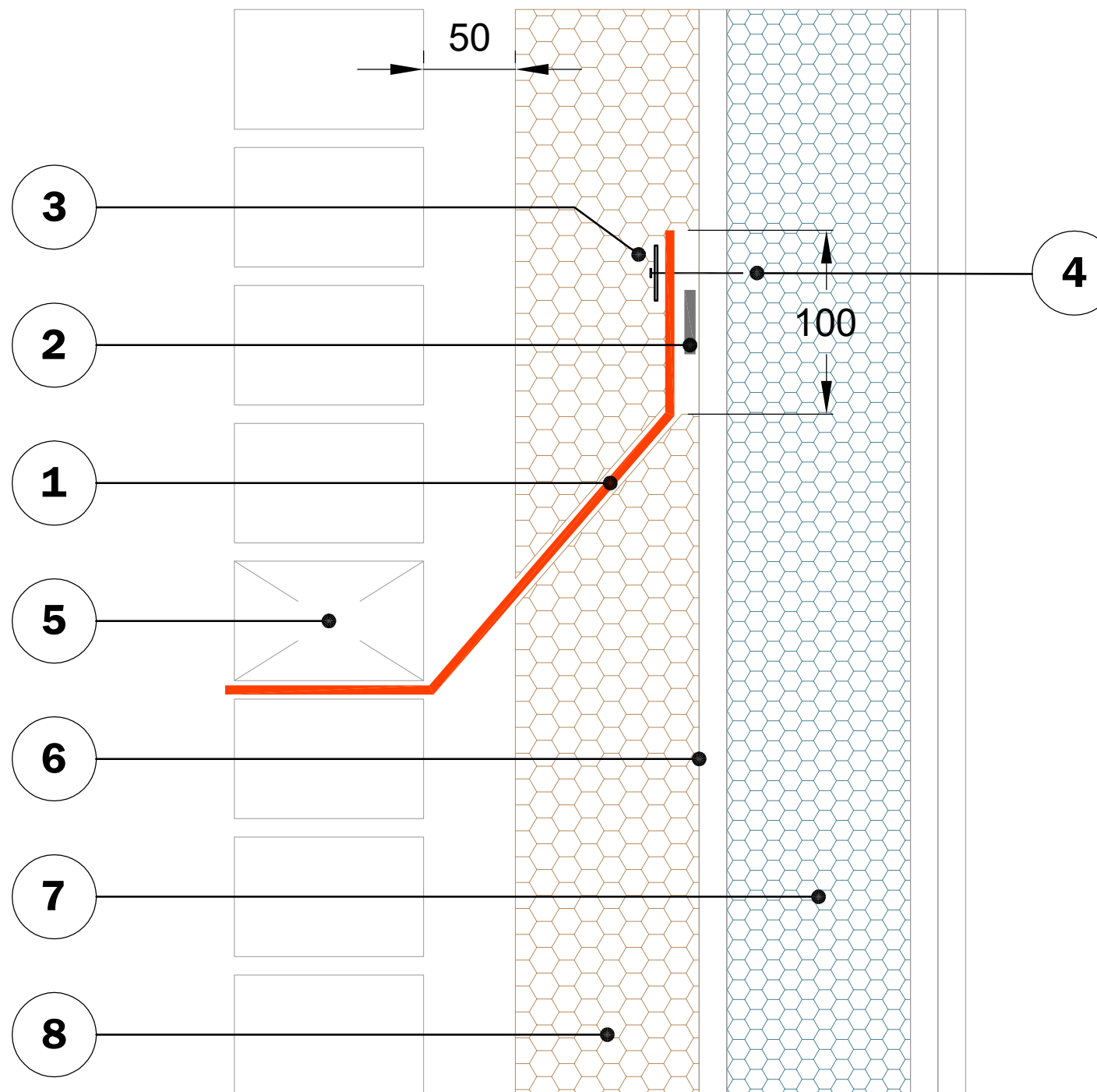


**KEY TO MATERIALS :-**

1	Visqueen Zedex Non-Combustible DPC cavity tray.
2	Visqueen Zedex Mastic.
3	Visqueen Non-Combustible Fixing Strip (1240mm strip pre-drilled with 8mm holes at 150mm centres).
4	Stainless steel mechanical fixings suitable for substrate by others.
5	Weepholes at intervals as specified and not less than 2 no. over each opening.
6	Weather defence board by others.
7	Structural Framing System by others.
8	Non-combustible insulation by others.



© Copyright reserved. This drawing may not be reproduced or amended without prior written permission.

Detail issued for guidance only. Designer's approval required.

Site construction sequencing should be assessed before the appropriate Visqueen Standard Detail is selected and approved by the designer.

All Visqueen materials must be installed in strict accordance with the manufacturer's instructions. Refer to the current Visqueen datasheets.

DPCs and DPC cavity trays to be installed in accordance with BS8215:1991, PD6697:2019 and BS8000-3:2020.

As standard, stainless steel Rigid Preformed Units and DPC Joint Supports are supplied without fixing holes and to BS EN 10088 grade 1.4301 (BS 1449 grade 304).

Do not scale, use figured dimensions only. All figured dimensions are in mm.

**Standard Detail**



[www.visqueen.com](http://www.visqueen.com)

Scale : NTS

Date : 12.04.2021

Drawing No : DPC-ZXNC-03

Revision Status : 0

**VISQUEEN**

**ZEDEX**  
NON-COMBUSTIBLE DPC

**Typical Cavity Tray Surface Fixing Detail :  
SFS with Masonry Façade.**

**VISQUEEN**  
0333 202 6800  
[www.visqueen.com](http://www.visqueen.com)  
[enquiries@visqueen.com](mailto:enquiries@visqueen.com)